

LONG ISLAND PULSE CONTENTS

SEPTEMBER 2010 / the back to business issue



Art image: *Winter Approaching* by Rachelle Krieger

ART
38

HEALTH & WELLNESS

BEAUTY PLACES/57

Toners finish the job your cleanser starts

BEAUTY PRODUCTS/55

The Aesthetic Center at Long Island Plastic Surgical Group

FITNESS/56

Your back to school workload doesn't have to mean tired eyes

SPORTS: FOOTBALL/47

Jets coach Rex Ryan has the attitude of a champion and the defense to match

THERAPY/59

Imagine Congress in marriage therapy

HOME

DESIGNER Q&A/41

Q&A with *The Outdoor Room's* Jamie Durie

REAL ESTATE/42

Could deflation hinder the second half of the selling season?

RENOVATIONS/43

Maximize your backyard experience with a sunroom or screened porch



Sports photo by David Pokress

47 SPORTS
Rex Ryan

LIVE THE ARTS

ART/38

Inaugural Long Island Biennial on View at Heckscher

FILM/34

My Dog Tulip

MUSIC: PROFILE/36

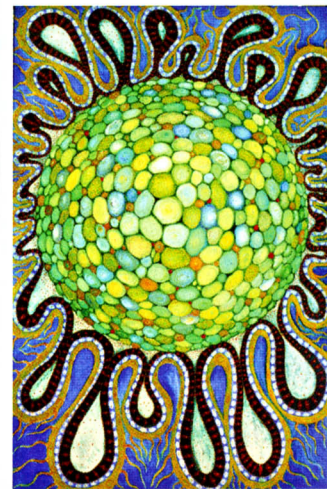
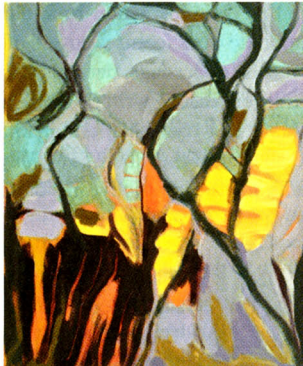
Soul Survivor: Interview with Felix Cavaliere

MUSIC: PLAYLIST/37

Recent releases for your personal soundtrack



Clockwise from top left: *Construction (Singapore)* by Ennid Berger, *5 billion CE III (New Life)* by Ewa Adamczyk Alvarez, *Emerging: A Tribute to Magritte* by Katherine Criss, *Winter Approaching* by Rachelle Krieger



pat rogers



Long Island Biennial on View

Heckscher Museum is reaching out

Wondering what Long Island artists are up to these days? The Heckscher Museum of Art decided to find out. The result is Long Island Biennial 2010. The show opened on July 31 and remains on view through September 26.

The Biennial is the first for the Heckscher. The show features 44 artworks selected from over 250 applications by three jurors. The show aims to take the pulse of Long Island art and capture a visual slice of what artists are up to these days. The new tradition was launched to

celebrate the Huntington art museum's 90th anniversary.

Nearly half of the Biennial is photography. Paintings make up around a third of the show. The balance is mixed media, ceramics, drawings, etching and monotype. Abstraction, landscape, pop, realism and surrealism are represented. Artists in The Biennial include Eric Dever, Gabriele Evertz, Tracy Harris, Anna Jurinich, Dan Hittleman, Toni Ross, Richard Vaux and Ellen Wiener.

The Best in Show was awarded to a digital

photograph by Ennid Berger titled *Construction (Singapore)*. The image has been exhibited at The Pen and Brush, Inc. in New York City and Jeannie Tengelsen Gallery's 52nd Exhibition of Long Island Artists. The photo was recently accepted into the permanent collection of the National Association of Women Artists, according to Ms. Berger's website (ennid.com).

The Biennial does not profess to be a survey of work by Long Island artists. Many established artists with New York galleries and/or museum credits did not apply **► Continued on p.39**

► Continued from p.38

for inclusion, said Heckscher Museum assistant curator Lisa Chalif. The inaugural Biennial is being deemed a success for its broad reach into geographically-dispersed Long Island artists. It also met the museum's goal of introducing the museum to artists and art lovers who were unaware of the Heckscher before the call for the Biennial was issued, she said.

All of the entries and the winners are part of online galleries at the museum's website. A Meet the Biennial Artists will be held on

September 12 from 3 to 5pm. The artists will discuss the creative process and explore what it means to be an artist in today's society. The winner of the People's Choice Award will also be announced. Visit heckscher.org or call (631) 351-3250 for details. The Heckscher Museum of Art is located at 2 Prime Avenue, Huntington.

A sister celebration of Long Island filmmakers is being held at Cinema Arts Centre in Huntington as part of the Long Island Biennial. See cinemaartscentre.org for details.



Reaching by Lita Kelmenson